

# DISCOVER DISCOVER DISCOVER **SKIMER BOARD**



## **FUN FOR THE WHOLE FAMILY**

The Skimer Board's design is based on the Manta Ray and was made not only for fun but with the intent of turn it into a safe and inclusive product, able to be enjoyed by children, parents, and grandparents alike.



**SURF**



**SNORKELING**



**SKI**



**DIVING**

# Waterski + Underwaterski + Surf + Snorkeling

## “Wakeboard” for bodyboarders



**SECURE:** One of the most secure boards in the industry, with a floating body and a quick-release system.

**READY TO USE:** Out of the box, you will have the Skimer Board, a wrist leash + our quick release system, and a 65ft long Yellow Towing rope (for Boat and Jet-ski use).

**FUN FOR EVERYONE!** All riders, regardless of skill or age, will be able to enjoy the Skimer Board on the first try! The Skimer Board is also wheelchair-friendly! The more experienced riders can spin underwater, surf stronger waves, and perform tricks, while less determined riders can calmly skim the water or use it as a snorkeling platform in calm waters.

**DURABLE:** The body of the Skimer Board is made with super resistant polyethylene with a Polycarbonate visor for looking underneath you in or into the water.

**COMFORTABLE:** The elbow guards are EVA foam for comfort, and the handles are rubber coated on top for extra comfort and designed with hand ergonomics in mind.

**INNOVATIVE:** The Skimer Board is a watersport innovation that has won numerous awards in design and innovation, along with patents for the board and quick-release system.



# What makes this waterski unique?



Has a US patent and your design is based on the Manta ray and was made not only for fun but with the intent of turning it into a safe and inclusive product, able to be enjoyed by children, parents, and grandparents alike. The Skimer Board is also wheelchair user-friendly without any changes due to its design.

## The Four Functions of this Waterski !

### Ski the surface of the water!

Attach our 65ft long tow rope to your vessel of choice, put on our wrist leash, and enjoy skiing the water with a maximum speed of around 14 Knots, or around 16MPH, depending on your weight!



### Ski Underwater

Experience the amazing feeling of flying underwater, simulating a ride on an aquatic animal, such as a Manta Ray, in which the body shape was inspired by. For this, we recommend a maximum speed of around 4 Knots, or around 5MPH.



### Snorkeling Platform

The body floats, making it the perfect tool for using it as a kickboard for kids, a snorkeling platform, or when enjoying calm waters. The clear visor on the bottom also allows you to see underneath into the water even when not submerged!



### Bodyboarding

Due to its design, provides superior stability when compared to a regular boogieboard. Maneuver through waves and perform tricks, with the added benefit of having fin slots on



# Quick description

Inspired in the shape of Manta Ray, designed to have greater hydrodynamics.



Floats made of developed polyethylene (super resistant)



Soft elbow guard for comfort.



Fin box inserts for future fin models, same as those used on surfboards, and may use one to three fins in order to maneuver.



Fins sold separately

Polycarbonate visor for bottom view during dive or planing on the surface. Also designed to decrease the friction of the body against water.

Elevated side edge for perfect elbow fitting, making the ski perfectly nestled between the arms of the skier, like a cockpit.

**Handles** designed for maximum hand ergonomics, with angles calculated for performance both above and underwater.



Wrist Leash, designed to disarm the quick release

Water shield designed to decrease the flow of water on the skier's face when diving.



Automatic quick release safety system, disengages the cable it is being pulled by.



This yellow ring disengages the skier from the Skimer board and what is pulling it.

## Skiing on the surface

Maximum 14 knots  $\approx$  25km / h

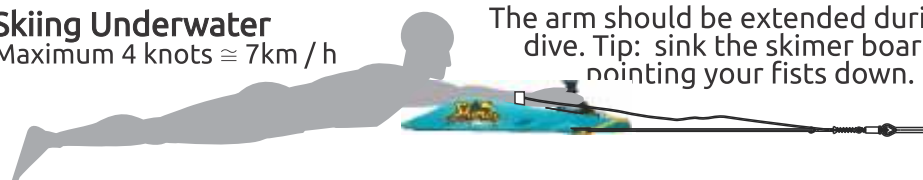


The arm should be flexed and the skier bent over the ski when speeding on the surface of the water.

**Tip:** Press your toes into the water for greater control

## Skiing Underwater

Maximum 4 knots  $\approx$  7km / h



The arm should be extended during the dive. Tip: sink the skimer board by pointing your fists down.

The Board is very versatile and can be used by boat or jetski, at sea or in lakes and dams, in addition to being able to be used only with the help of fins, the water can be clear to dive or dark because you still ski on the surface as a wakeboard for bodyboarder!

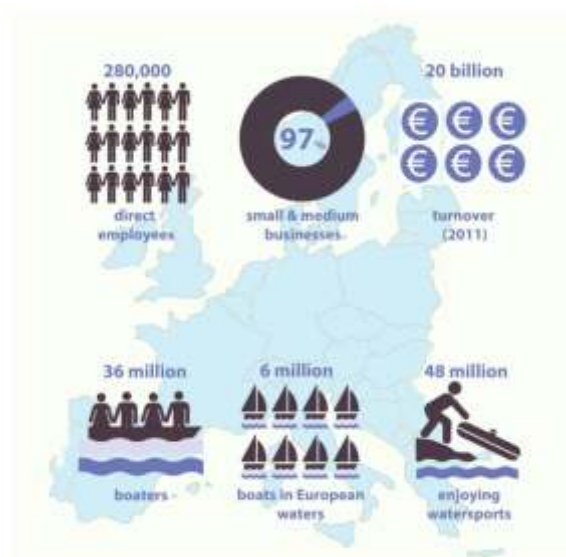
Skimer Board Compared to Other Water Sports					
					
	Board	Towable Tubes	Towable Board Sports	Wake Surfing	Underwater Boards
Compatible with all motorboats	✓	✓			✓
Ski on your first try	✓	✓			
Tow multiple boards at once	✓				✓
Works in murky water	✓	✓	✓	✓	
Not physically demanding	✓	✓			✓
Usable without Vessel	✓			✓	
Floats naturally	✓	✓			
Safe quick-release system	✓				

# International market-

Target audience- Owners of Sport and Recreation vessels.



Mercado ( País) NATION	Population	Person per Boats	Boats
Estados Unidos	318.900.000,00	19	16.784.210,53
Africa do sul	52.980.000,00	9	5.886.666,67
Suécia	9.593.000,00	11	872.090,91
Australia	23.130.000,00	27	856.666,67
Noruega	5.084.000,00	6	847.333,33
BRASIL			815.452,00
Finlandia	5.439.000,00	7	777.000,00
Itália	59.830.000,00	98	610.510,20
UK	64.100.000,00	114	562.280,70
Países baixos	16.800.000,00	31	541.935,48
França	66.030.000,00	128	515.859,38
NOVA ZELANDIA	4.471.000,00	9	496.777,78
Alemanha	80.620.000,00	165	488.606,06
Espanha	46.770.000,00	210	222.714,29
Japão	127.300.000,00	573	222.164,05
Argentina	41.450.000,00	252	164.484,13
Grecia	11.030.000,00	71	155.352,11
Suiça	8.081.000,00	78	103.602,56
Turquia	74.930.000,00	941	79.628,06
Polonia	38.530.000,00	649	59.368,26
Irlanda	4.595.000,00	157	29.267,52
Republica Tcheca	10.520.000,00	644	16.335,40



Source: ICOMIA Statistics Book 2010





### Materials-

Polyethylene PE - Stainless Steel

EVA - Polypropylene PP

Polycarbonate PC

### Packaging Items

01 Skimer Board

01 Cable of 20m PE

01 Leash with quick realise

01 Instruction and safety manual

### Color Variations

Blue

Red

Yellow

### Awards & Reviews

Design

Innovation

### Patents

USA Patent

Brasil Patent



Fun for family  
Can use up to  
3 per boat

New adventures  
and sensations  
explorer.

New Sport  
**Wakeboard**  
for bodyboarders

New Sport  
**Surf board**





# Accessories to work in the future, spare parts and product ressell



# Future

## Events



## Championship



## Boat Show



## Some Future Possible Business brand Partners



All boats brand



# New possibilities and niches



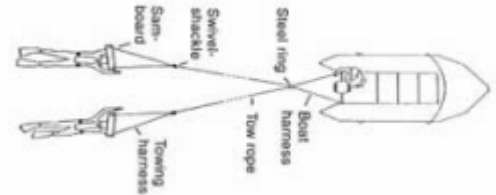
Accessories for  
clean the ocean  
in snorkeling tip.



## Spearfishing Board



Towing hunters Spearfishing  
board Lobster



Accessory to attach  
and turning a Marine Scooter  
or marine safe scooter





ISPO  
Munich



Hall B2  
Booth B22

# Skimer

BOARD

We are **Startup iLunga**  
Innovative Products, we  
design and market our  
products for leisure and  
water sports, like the  
Skimer board, a new sport  
with a series of  
accessories to be  
explored and all the  
opportunities that a new  
sport can offer

**iLunga** has offices in **Brazil**  
and in the **United States**.

The Skimer Board is

- **Manufactured in Brazil,**
- **Distributed in Brazil and in the US**
- **Patented in both countries.**

The company is looking for water sports  
and maritime aficionados **investors** to  
help us increase production and be able  
to market for resellers and distributors  
for international markets.



@skimerboard

JEFFSKAS.COM.BR

Send us  
an email

# iLUNGA

INNOVATIVE PRODUCTS

[contato@ilunga.com.br](mailto:contato@ilunga.com.br)